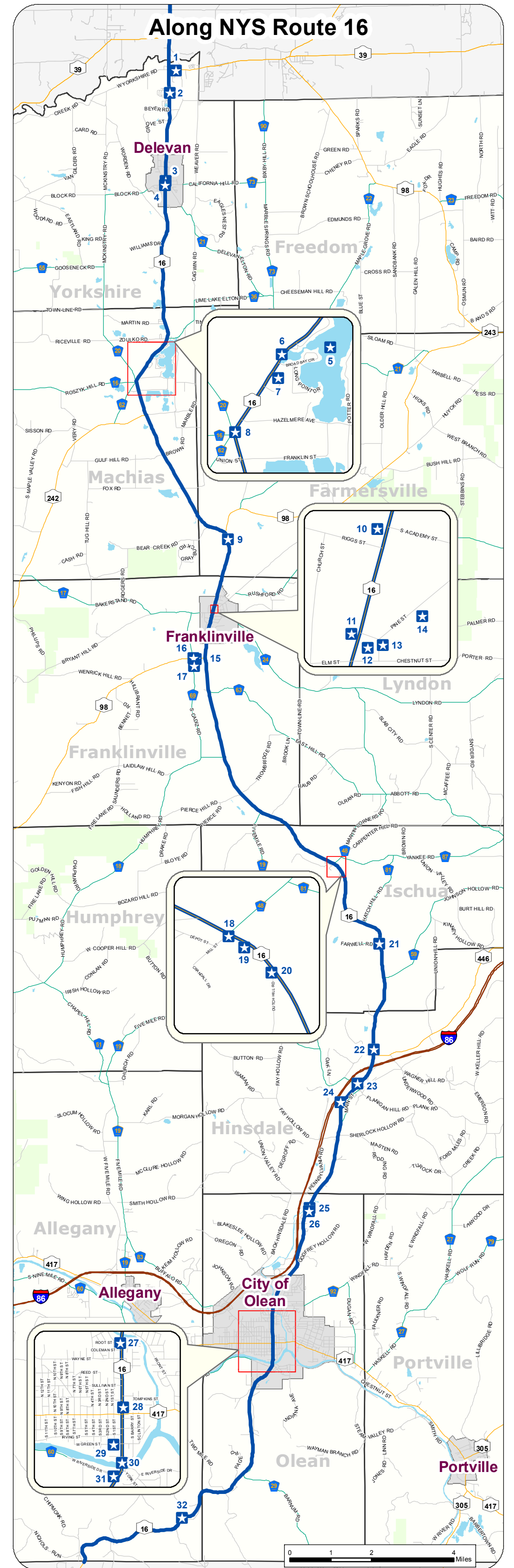
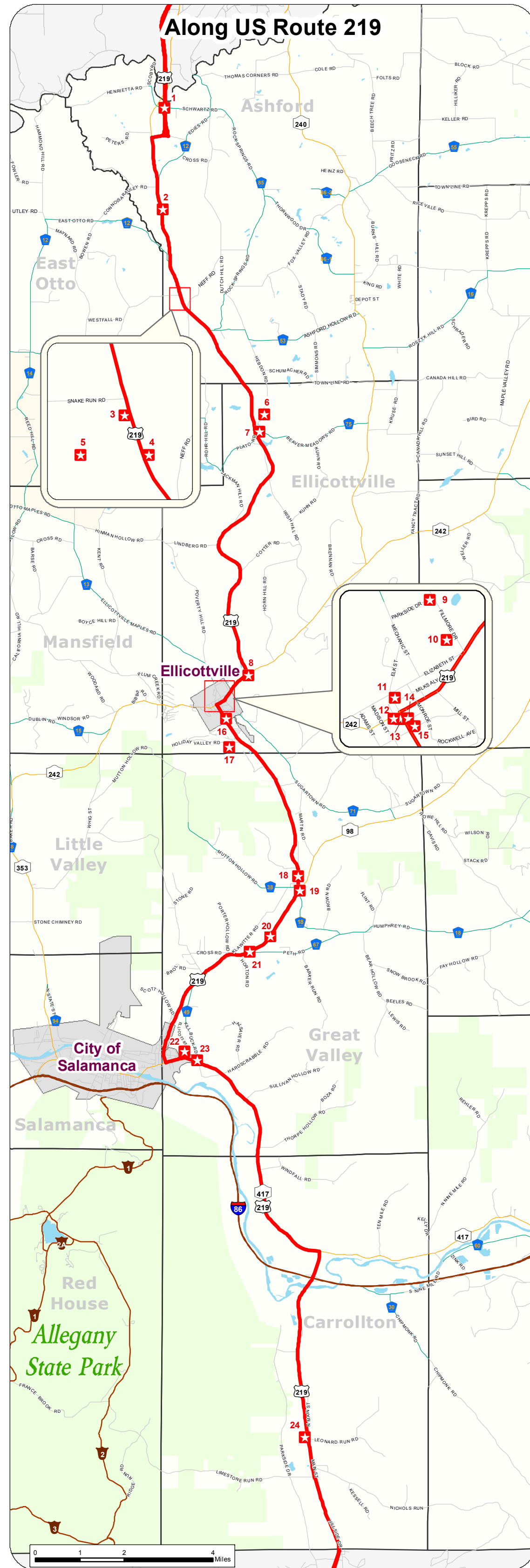
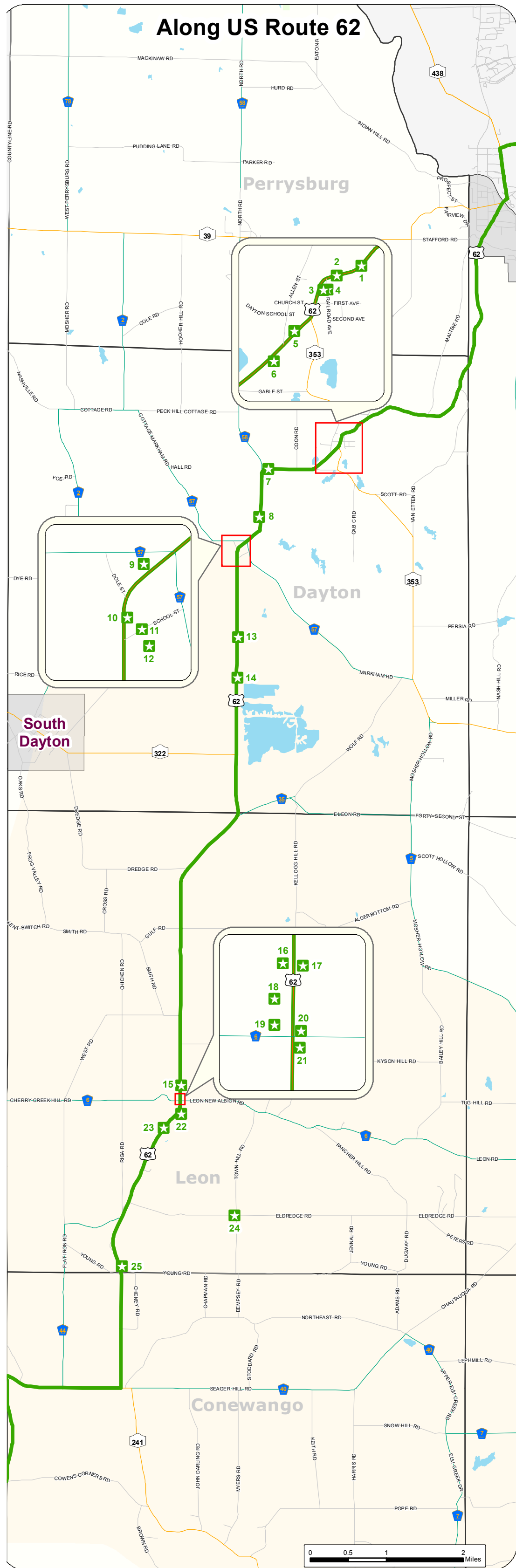


# Historic Trails in the Enchanted Mountains

of Cattaraugus County



- 1. Pond from Dairylee Milk Coop
- 2. Dayton Grange
- 3. Dayton Depot
- 4. Eggleston and Volk's Hotel
- 5. Dayton Historical Society and Museum
- 6. St Paul of the Cross Catholic Cemetery
- 7. Old School location
- 8. Markham Cemetery
- 9. Markham Hotel
- 10. Old Cheese Factory
- 11. Former Markham School
- 12. German Cemetery
- 13. Former Methodist Episcopal Church of Fair Plain
- 14. Country Side Sand and Gravel
- 15. Cemetery with Soldiers Monument
- 16. Museum (previously Grange #795)
- 17. Blacksmith Shop
- 18. Harris Store/ Greeley Store
- 19. Leon United Methodist Church
- 20. Dunlap Store in Leon Center
- 21. Noyes Hotel
- 22. Milk Plant
- 23. Fenton Public House for stagecoaches
- 24. Pennyroyal Race Track
- 25. Valley View Cheese Factory

- 1. Cattaraugus Creek
- 2. Franktown Cemetery and Schoolhouse
- 3. Century Farm
- 4. Ashford Hollow Cemetery
- 5. Griffis Sculpture Park
- 6. Antler Shed Whitetail Museum
- 7. St Paul's Cemetery/Plato Cemetery
- 8. Holy Cross Cemetery
- 9. Nannen Arboretum
- 10. Larimer and Norton Building
- 11. Ellicottville Historical Society
- 12. Frame House
- 13. Ellicottville Episcopal Church
- 14. 1887 Building
- 15. Holy Name of Mary Roman Catholic Church
- 16. Jefferson Street Cemetery
- 17. Holiday Valley
- 18. Chamberlain Cemetery
- 19. Evergreen Tea Room (Great Valley Hotel)
- 20. Green Cemetery
- 21. Peth Area
- 22. Ellicott Street Cemetery (Killbuck Catholic Cemetery)
- 23. Killbuck Area
- 24. Limestone Cemetery

- 1. Yorkshire Cemetery
- 2. Historic Marker (Rt 16)
- 3. World War I Vets Monument
- 4. Read Building
- 5. Lime Lake
- 6. Poor House Marker
- 7. Cattaraugus County Historical Museum
- 8. Soldier Monument
- 9. Ten Broeck Cemetery
- 10. Riggs Estate
- 11. Franklinville Town Hall
- 12. Franklinville Park Square
- 13. Ontario's Knife Company Outlet Store
- 14. Miner's Cabin
- 15. Howe-Prescott House
- 16. The Stagecoach Inn
- 17. Cadiz Cemetery
- 18. Ischua Town Hall
- 19. Ischua Union Church
- 20. Dutch Hill War
- 21. Ischua One Room Schoolhouse
- 22. Hinsdale Cemetery
- 23. Ischua Creek
- 24. Genesee Valley Canal Lock
- 25. Pleasant Valley Cemetery
- 26. B'Nai B'rith Cemetery
- 27. Area across from Olean General Hospital
- 28. Olean House
- 29. Olean Brewing Company Buildings
- 30. Allegheny River
- 31. Mount View Cemetery
- 32. Rock City Park

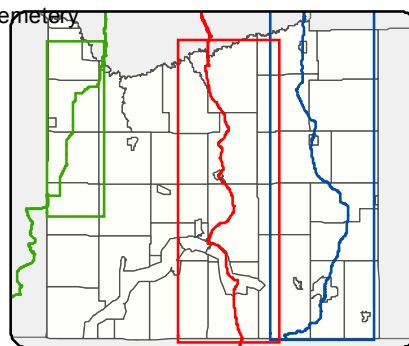
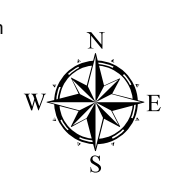
\*\* GPS Files are available for download at [www.EnchantedMountains.com](http://www.EnchantedMountains.com) \*\*



This map was created using GIS & GPS technology. Prepared by Cattaraugus County Department of Economic Development, Planning, & Tourism

Real Property & GIS Services  
303 Court Street  
Little Valley, NY 14755  
(716) 938-9111

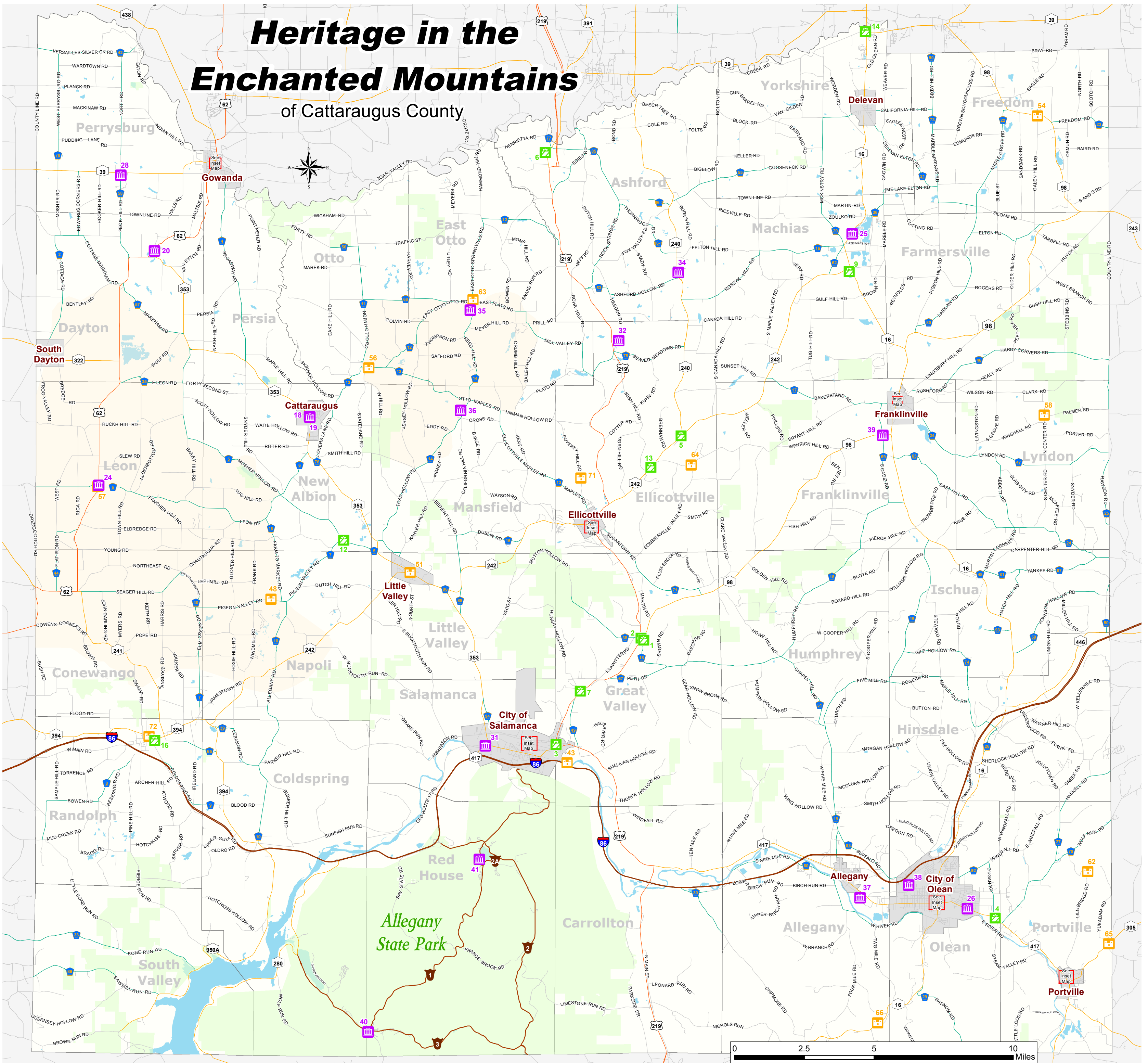
Daniel T Martonis - Real Property & GIS Director  
Chris Holewinski - GIS Coordinator  
Updated 2014



\*More information on all locations available within brochure or at [www.HistoricPath.com](http://www.HistoricPath.com)

# Heritage in the Enchanted Mountains

of Cattaraugus County



- Amish Country
- Recreational Land
- Antique Shops**
- 1. About Time Clock Shop
- 2. Antiques & Interiors
- 3. Austin Antiques
- 4. Country Gentleman Antiques
- 5. Ellicottville Country Store & Antiques
- 6. Granny's Boot Antiques
- 7. Great Valley Antique Center
- 8. Heart of Franklinville & Red Brick Mercantile
- 9. Jack of All Trades
- 10. Portville Books and Collectables
- 11. Salamanca Mall Antiques
- 12. Schwartz's Antiques & Surplus
- 13. The Birdwalk Restaurant & Antiques
- 14. The Co-op Yesterday & Today
- 15. The New-Antique Shop
- 16. Vintage Variety Store at 129 Main Street
- 17. Ye Olde Apothecary & Vintage Market
- Museums**
- 18. American Museum of Cutlery
- 19. Cattaraugus Area Historical Society Museum
- 20. Dayton Historical Museum
- 21. Ellicottville Historical Society Museum
- 22. Ischua Valley Historical Society (Miners Cabin)\*
- 23. Gowanda Historical Museum
- 24. Leon Historical Society (Leon Grange #795)\*
- 25. Cattaraugus County Historical Museum
- 26. Cutco/Ka-Bar Visitors Center
- 27. Fannie E. Bartlett Historical House & Olean Point Museum
- 28. Perryburg Historical Museum
- 29. Portville Historical & Preservation Society Museum
- 30. Salamanca Rail Museum
- 31. Seneca-Iroquois National Museum
- 32. Antler Shed Whitetail Museum
- 33. Salamanca Historical Society Museum
- 34. Ashford Historical Society
- 35. East Otto Historical Museum
- 36. Mansfield Area Historical Society Museum
- 37. Regina A. Quick Center for the Arts
- 38. African American Center for Cultural Development
- 39. Howe-Prescott Pioneer House
- 40. Old Quaker Store Museum
- 41. Red House Administration Building
- Historic Registry Sites**
- 42. Ellicottville Historic District
- 43. Zawatski Site
- 44. Oak Hill Park Historic District
- 45. Park Square Historic District
- 46. US Post Office--Olean
- 47. Ellicottville Town Hall
- 48. Gladden Windmill
- 49. Olean Public Library
- 50. Gowanda Village Historic District
- 51. US Post Office--Little Valley
- 52. Portville Free Library
- 53. Olean Armory
- 54. Salem Welsh Church
- 55. Conklin Mountain House
- 56. First Congregational Church of Otto
- 57. Leon United Methodist Church
- 58. North Lyndon Schoolhouse
- 59. St. Stephen's Episcopal Church Complex
- 60. Bank of Gowanda
- 61. William E. Wheeler House
- 62. Pfeiffer-Wheeler American Chestnut Cabin
- 63. East Otto Union School
- 64. Bryant Hill Cemetery
- 65. Bedford Corners Historic District
- 66. House at 520 Hostageh
- 67. Jefferson Street Cemetery
- 68. Olean School Number 10
- 69. Temple B'Nai Israel
- 70. Beardsley-Oliver House
- 71. John J Aiken House
- 72. Randolph Historic District

\*\* GPS Files are available for download at [www.EnchantedMountains.com](http://www.EnchantedMountains.com) \*\*  
at [www.enchantedmountains.com](http://www.enchantedmountains.com) \*\*



This map was created using GIS & GPS technology  
Prepared by Cattaraugus County  
Department of Economic Development, Planning & Tourism  
and the Office of Real Property  
303 Court Street  
Little Valley, New York 14755  
(716) 938-2320  
[www.cattco.org](http://www.cattco.org)  
June 2014

