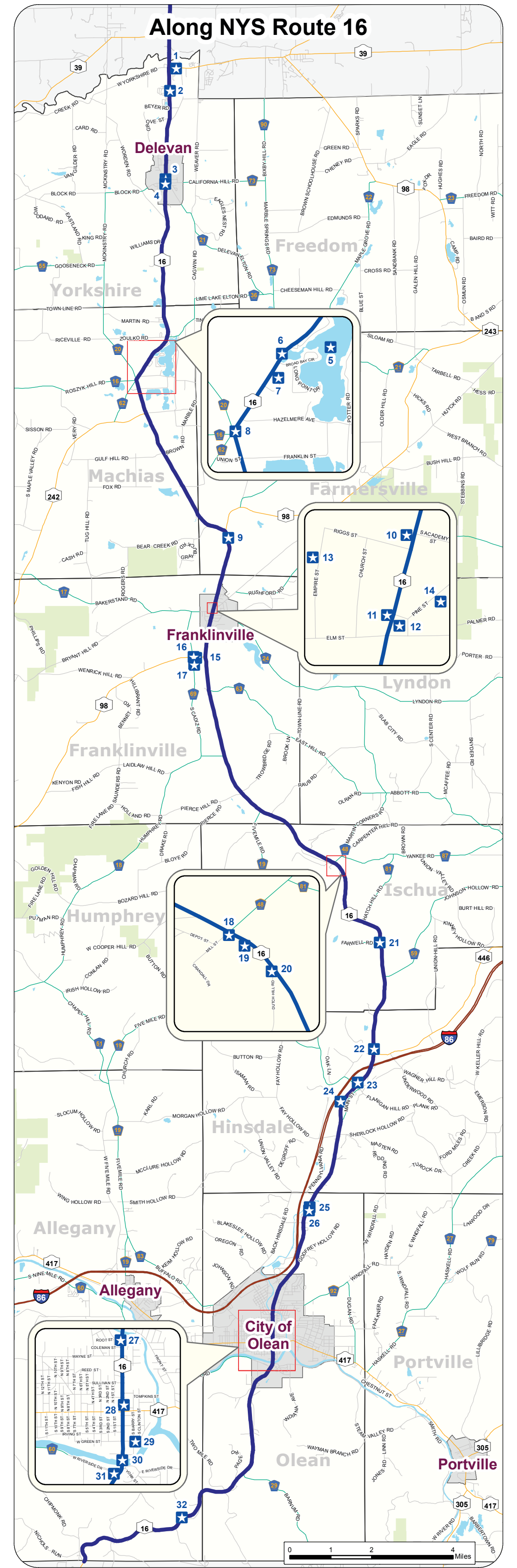
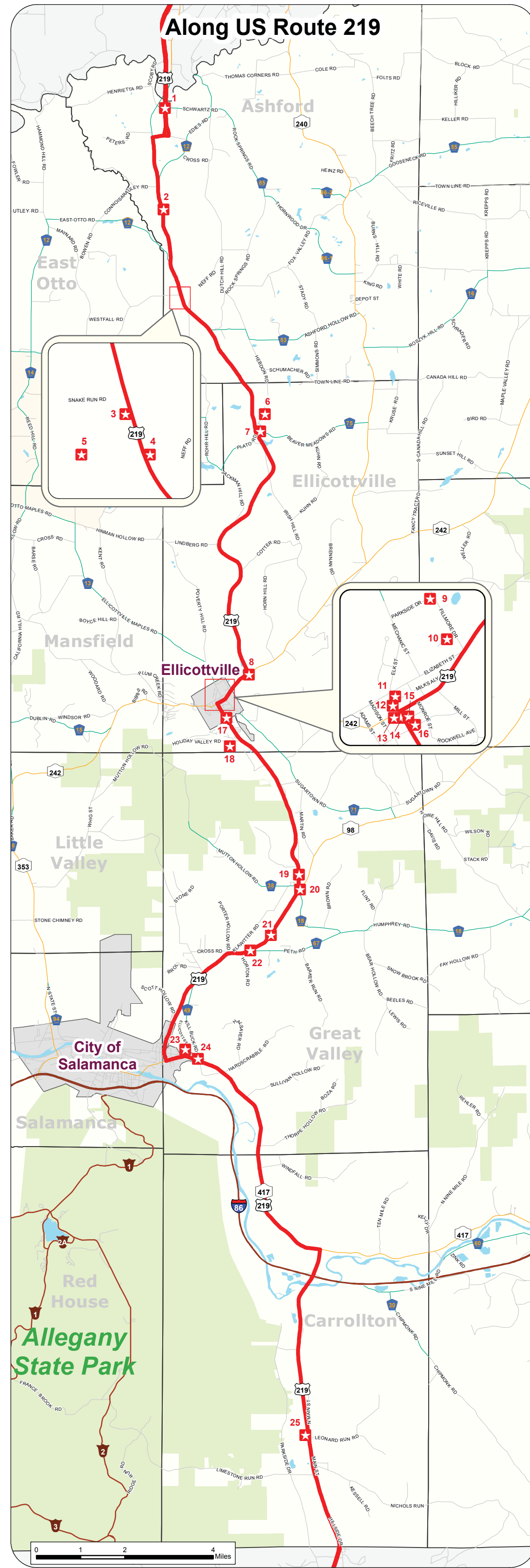
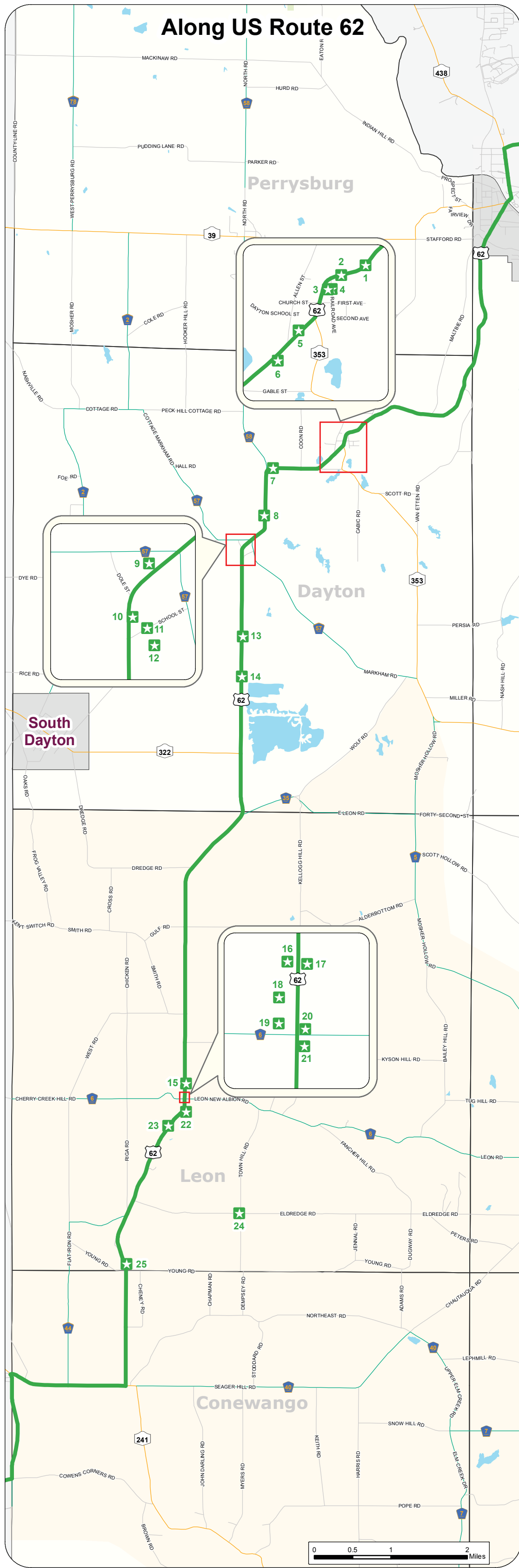


Historic Trails in the Enchanted Mountains

of Cattaraugus County



- 1. Pond from Dairylee Milk Coop
- 2. Dayton Grange
- 3. Dayton Depot
- 4. Eggleston and Volk's Hotel
- 5. Dayton Historical Society and Museum
- 6. St Paul of the Cross Catholic Cemetery
- 7. Old School location
- 8. Markham Cemetery
- 9. Markham Hotel
- 10. Old Cheese Factory
- 11. Former Markham School
- 12. German Swamp
- 13. Former Methodist Episcopal Church of Fair Plain
- 14. Country Side Sand and Gravel
- 15. Cemetery with Soldiers Monument
- 16. Museum (previously Grange #795)
- 17. Blacksmith Shop
- 18. Harris Store/ Greeley Store
- 19. Leon United Methodist Church
- 20. Dunlap Store in Leon Center
- 21. Noyes Hotel
- 22. Milk Plant
- 23. Fenton Public House for stagecoaches
- 24. Pennyroyal Race Track
- 25. Valley View Cheese Factory

- 1. Cattaraugus Creek
- 2. Franktown Cemetery and Schoolhouse
- 3. Century Farm
- 4. Ashford Hollow Cemetery
- 5. Griffis Sculpture Park
- 6. Antler Shed Whitetail Museum
- 7. St Paul's Cemetery/Plato Cemetery
- 8. Holy Cross Cemetery
- 9. Nannen Arboretum
- 10. Larimer and Norton Building
- 11. Ellicottville Historical Museum
- 12. Ellicottville Town and Village Hall
- 13. Frame House
- 14. Ellicottville Episcopal Church
- 15. 1887 Building
- 16. Holy Name of Mary Roman Catholic Church
- 17. Jefferson Street Cemetery
- 18. Holiday Valley
- 19. Chamberlain Cemetery
- 20. The Great Valley Hotel (Evergreen Tea Room)
- 21. Green Cemetery
- 22. Peth Area
- 23. Killbuck Catholic Cemetery aka Ellicott Street Cemetery
- 24. Killbuck Area
- 25. Limestone Cemetery

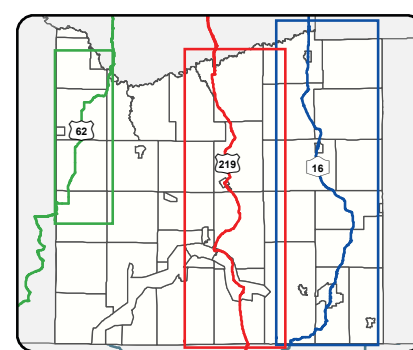
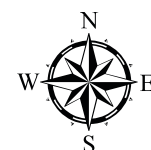
- 1. Yorkshire Cemetery
- 2. Historic Marker (Rt 16)
- 3. World War I Vets Monument
- 4. Read Building
- 5. Lime Lake
- 6. Poor House Marker
- 7. Cattaraugus County Historical Museum
- 8. Soldier Monument
- 9. Ten Broeck Cemetery
- 10. Riggs Estate
- 11. Franklinville Town Hall
- 12. Franklinville Park Square
- 13. Ontario's Knife Company Outlet Store
- 14. Simeon B Robbins House
- 15. Howe-Prescott House
- 16. The Stagecoach Inn
- 17. Cadiz Cemetery
- 18. Ischua Town Hall
- 19. Ischua Union Church
- 20. Dutch Hill War
- 21. Ischua One Room Schoolhouse
- 22. Hinsdale Cemetery
- 23. Ischua Creek
- 24. Genesee Valley Canal Lock
- 25. Pleasant Valley Cemetery
- 26. B'Nai B'rith Cemetery
- 27. Area across from Olean General Hospital
- 28. Olean House
- 29. Four Mile Brewing
- 30. Alleghany River
- 31. Mount View Cemetery
- 32. Rock City Park

*More information on all locations available within brochure or at www.HistoricPath.com

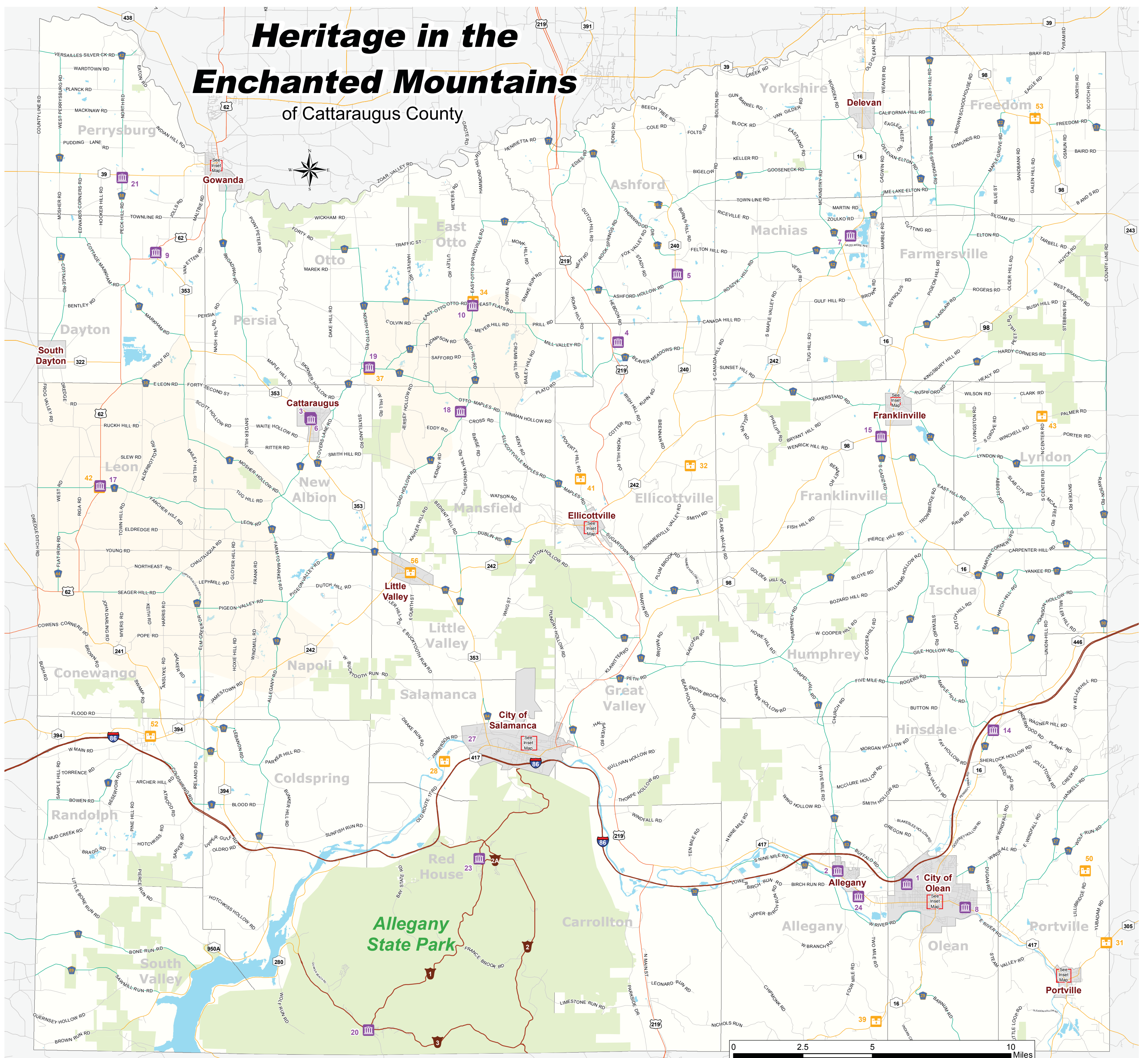


This map was created using GIS & GPS technology.
Prepared by Cattaraugus County
Department of Economic Development, Planning, & Tourism
&
Real Property & GIS Services
303 Court Street
Little Valley, NY 14755
(716) 938-9111

Daniel T Martonis - Real Property & GIS Director
Chris Holewinski - GIS Coordinator
Updated 2018



Heritage in the Enchanted Mountains of Cattaraugus County



Amish Country
Recreational Land

Museums

- 1. African American Center for Cultural Development
- 2. Allegany Area Historical Association & Museum
- 3. American Museum of Cutlery
- 4. Antler Shed Whitetail Museum
- 5. Ashford Historical Museum
- 6. Cattaraugus Area Historical Society Museum
- 7. Cattaraugus County Historical Museum
- 8. Cutco/Ka-Bar Visitors Center
- 9. Dayton Historical Museum
- 10. East Otto Historical Museum
- 11. Ellicottville Historical Museum*
- 12. Fannie E. Bartlett Historical House & Olean Point Museum
- 13. Gowanda Historical Museum
- 14. Hinsdale Historical Society Museum
- 15. Howe-Prescott Pioneer House
- 16. Ischia Valley Historical Society & Simeon B. Robbins House*
- 17. Leon Grange #795 & Historical Society Museum*
- 18. Mansfield Area Historical Society Museum

- 19. Medora Ball Museum
- 20. Old Quaker Store Museum
- 21. Perryburg Historical Museum
- 22. Portville Historical & Preservation Society Museum
- 23. Red House Administration Building
- 24. Regina A. Quick Center for the Arts
- 25. Salamanca Historical Society Museum
- 26. Salamanca Rail Museum
- 27. Seneca-Iroquois National Museum/Cultural Center

Historic Registry Sites

- 28. Allegany Council House
- 29. Bank of Gowanda
- 30. Beardsley-Oliver House
- 31. Bedford Corners Historic District
- 32. Bryant Hill Cemetery
- 33. Conklin Mountain House
- 34. Ellicottville Historic District
- 35. East Otto Union School
- 36. Ellicottville Town and Village Hall
- 37. First Congregational Church of Otto
- 38. Gowanda Village Historic District
- 39. House at 520 Hostageh
- 40. Jefferson Street Cemetery
- 41. John J Aiken House
- 42. Leon United Methodist Church
- 43. North Lyndon Schoolhouse
- 44. Oak Hill Park Historic District
- 45. Olean Armory
- 46. Olean Historic District
- 47. Olean Public Library
- 48. Olean School Number 10
- 49. Park Square Historic District
- 50. Pfeiffer-Wheeler American Chestnut Cabin
- 51. Portville Free Library
- 52. Randolph Historic District
- 53. Salem Welsh Church
- 54. St. Stephen's Episcopal Church Complex
- 55. Temple B'Nai Israel
- 56. US Post Office--Little Valley
- 57. US Post Office--Olean
- 58. William E. Wheeler House

* Denotes site that is also on the Historic Registry



This map was created using GIS & GPS technology
Prepared by Cattaraugus County
Department of Economic Development, Planning & Tourism
and the Office of Real Property
303 Court Street
Little Valley, New York 14755
(716) 938-2320
www.cattco.org
October 2018

