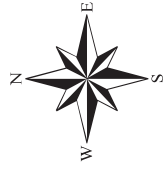
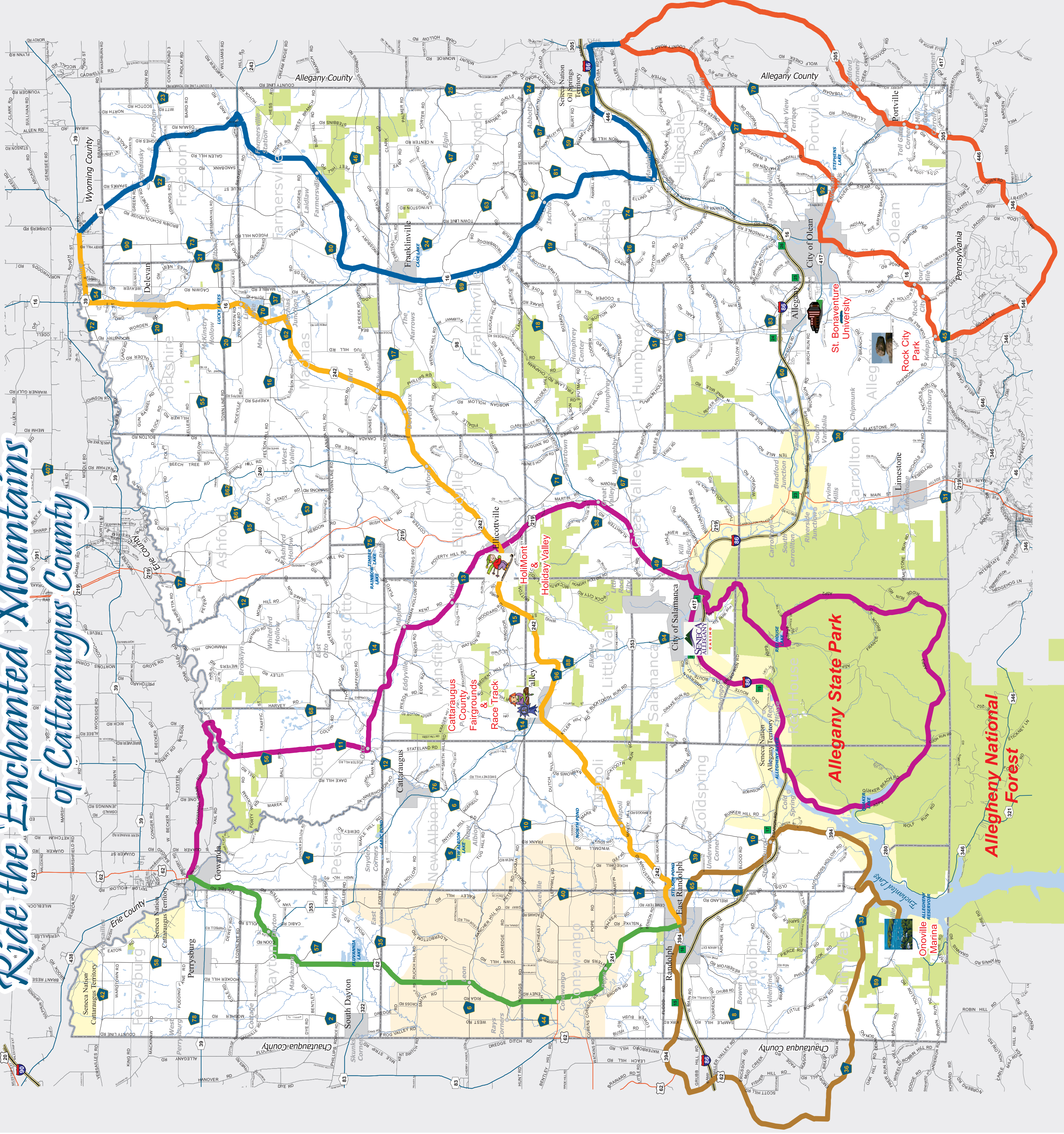


Ride the Enchanted Mountains of Cattaraugus County



- ### Legend
- Seneca Nation Territory
 - Amish
 - Heritage
 - Blue Highways
 - Explore Our Villages
 - Enchanted Mountains
 - Town & Country
 - Waterbodies
 - Streams
 - Amish Country
 - State Land or National Forest
 - Interstate Highway
 - Interstate Ramp
 - US Highway
 - NYS Highway
 - County Road
 - City Street
 - Village Street
 - Town Road



This map was created using GIS & GPS technology.
 Prepared by Cattaraugus County
 Department of Economic Development, Planning & Tourism
 &
 Real Property Services
 303 Court Street
 Little Valley, NY 14755
 (716) 938-2331
www.cattco.org



Cattaraugus County, its Departments, employees and agents make no representation or warranty as to the accuracy of the trails indicated on the map. Cattaraugus County does not endorse or give permission for the use of the trails and is not liable for any claims from riders. The trails are listed only as a guide to the trails available in this County and are subject to change at any time.

Amish Ride - Slow down, keep an eye out for the horse drawn buggies, put your camera away and step back in time as you motor through Amish country in the western part of the Enchanted Mountains. Grab a copy of our Amish brochure and take a side trip to pick up some homemade baked goods and amish crafts. (26 miles)

Heritage Ride - From Zoar Valley in the north to the Allegany State Park in the south, this ride offers a taste of the natural, historical and cultural heritage of the entire Enchanted Mountains region. Couple this with the food and fun of Salamanca and Elicottville and your day is complete. (77 miles)

Blue Highways Ride - "Life doesn't happen along the Interstates. It's against the law." That's how William Least Heat Moon described Blue Highways in his book. Discover what life is really about on the wide-open Blue Highways of the Enchanted Mountains. (42 miles)

Explore Our Villages Ride - With plenty of pit stops and places to eat, exploring the villages of the Enchanted Mountains was never easier. This ride has it all; beautiful vistas, smooth roads, interesting attractions and unique shopping opportunities. Come see why village living attracts some of the friendliest folks around. (45 miles)

Enchanted Mountains Ride - With beautiful views of Enchanted Lake, curving country roads and beautiful mountains, the "Enchanted Mountains" ride offers an escape from the everyday. This lightly traveled highway offers plenty of opportunities for a relaxing lunch or a bit of shopping in the Village of Randolph. (40 miles)

Town and Country Ride - See the best of both worlds of the Enchanted Mountains. This ride gives you a taste of stunning mountain scenery, cools stops to hang-out and relax, picturesque village streetscapes and the world's largest exposure of quartz conglomerate at Rock City Park. Who could ask for more? (53 miles)

For information about the trails or where to stay contact us at 1-800-331-0543 or go to www.EnchantedMountains.com