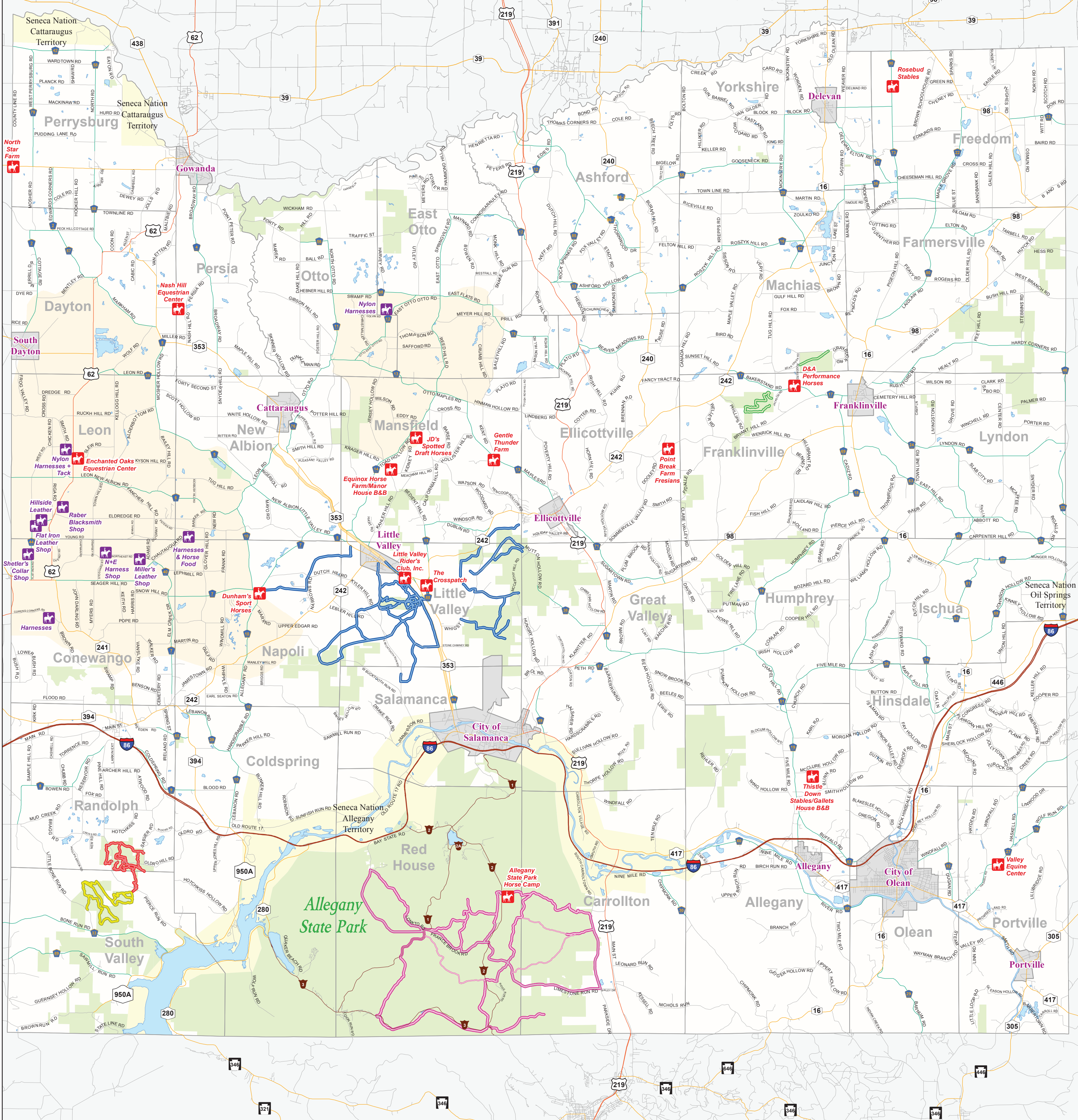


Cattaraugus County Equestrian Trails



- 0 1.5 3 6 Miles
- Horse Trails**
- ASP Equestrian Trails
 - Marked Trails/Roads
 - Unimproved Trails
 - Creekside Roundup Trails
 - Little Valley Riders Club
 - Pine Hills Trail - Red
 - Pine Hills Trail - Yellow
 - Pat McGee Trail
 - Equestrian Businesses
 - Amish Equestrian Businesses
- Streets**
- Interstate
 - US Highway
 - State Highway
 - County Highway
 - ASP Roads
 - Town Roads
 - Seneca Nation of Indians
 - Amish Country
 - State Recreation Land
 - Towns
 - Waterbodies
 - Cities and Villages

www.EnchantedMountains.com

ccha
 Cattaraugus County Horsemen's Association
 P O Box 1107, Ellicottville, NY 14731
 HorsemenAssociation@gmail.com
 "Promoting horse businesses & improving horsemanship in our County"

Horse Resource
 Connecting People and Horses in Need...
 Not for profit, just for help!
 To act as a resource to improve equine welfare in WNY.
 Contact us at info@Horse-Resource.org
www.Horse-Resource.org

Cattaraugus County, its Departments, employees and agents make no representation or guarantee as to the safety or accuracy of the trails indicated on this map. Cattaraugus County does not endorse or give permission for the use of the trails and is not liable for any claims from riders or landowners. The trails are listed only as a guide to the trails available in the County and are subject to change at any time.



This map was created using GIS technology
 Prepared by Cattaraugus County
 Department of Economic Development, Planning & Tourism
 Office of Real Property & GIS Services
 303 Court Street
 Little Valley, New York 14755
 (716) 938-9111
www.cattco.org
 Daniel Martonis - Real Property Director
 Chris Holewinski - GIS Coordinator
 Updated January 2016

