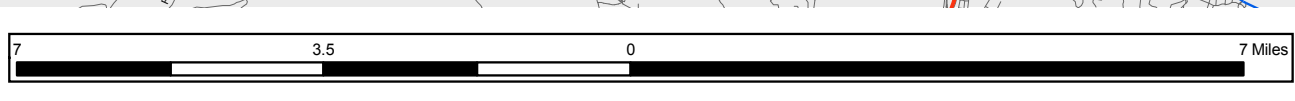
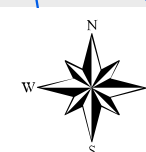
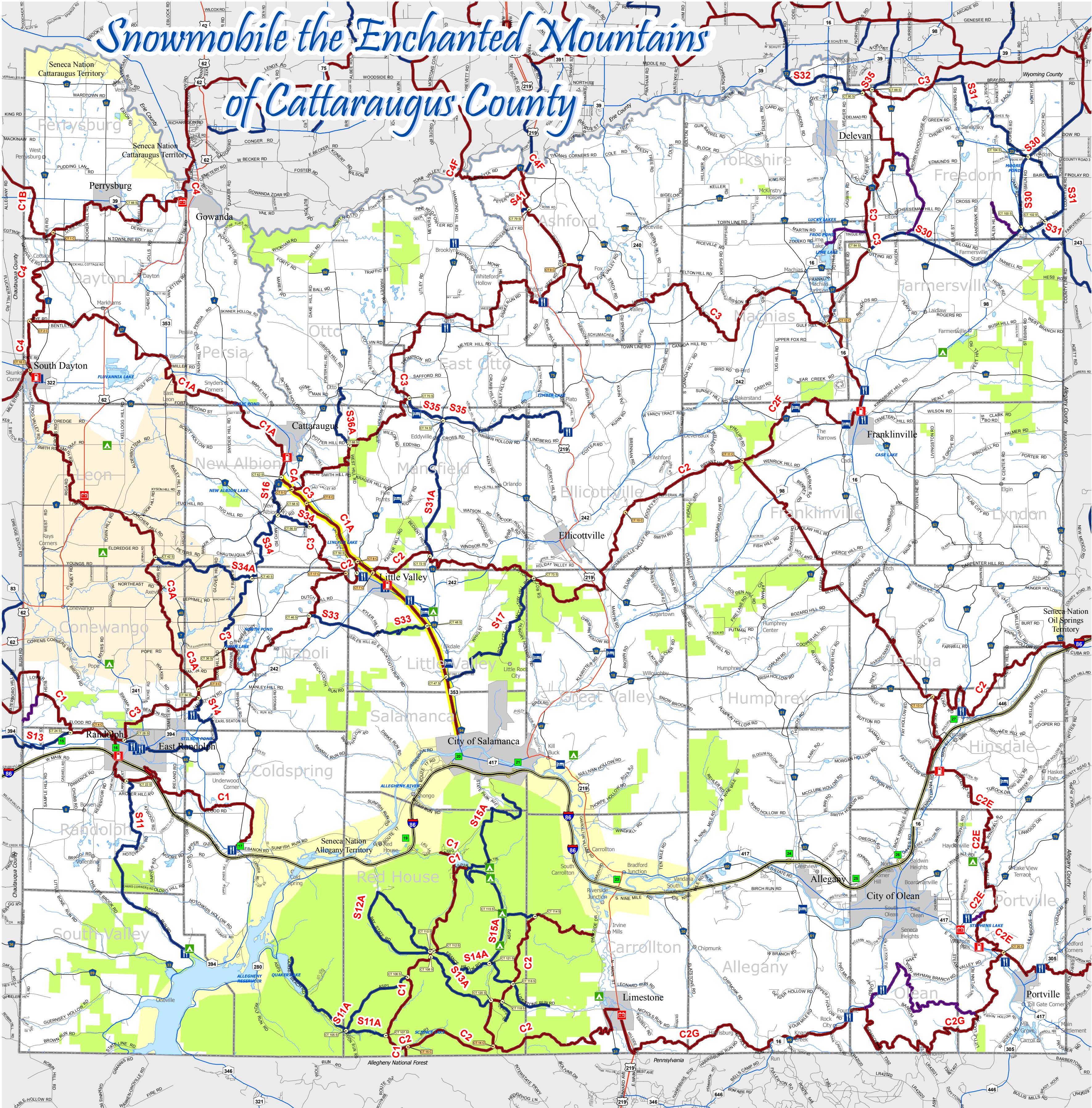


Snowmobile the Enchanted Mountains of Cattaraugus County



Legend

- Corridor Trail
- Secondary Trail
- Unfunded Trail
- Pat McGee Trail
- Waterbodies
- Streams
- Parts/Rep
- Cabins
- Lodging
- Food
- Gas
- Amish Country
- Seneca Nation Territory
- State Land
- Interstate Highway
- Interstate Ramp
- US Highway
- NYS Highway
- County
- City Street
- Village Street
- Town Road

The *Enchanted Mountains* of Cattaraugus County is home to Allegany State Park, the largest State Park in New York and the third largest State Park in the Nation. Over 350 miles of Groomed Snowmobile Trails abound in Cattaraugus County, **PLUS** over 70 miles of Well Groomed Trails in scenic Allegany State Park.

Cattaraugus County has Nine Snowmobile Clubs within its borders.

- *Ashford Snowmobile Club* – 5676 Townline Road, West Valley, NY 14171
- *Elibomwons* – 149 A Hall Street, Randolph, NY 14772
- *Enchanted Mountains Border Riders* – 3474 Church Road, Allegany, NY 14706
- *Franklinville Snowmobile Club* – 7390 Route 16, Franklinville, NY 14737
- *Portville Snowmobile Club* – P.O. Box 466, Portville, NY 14770 – Web: www.portvillesnowmobileclub.org
- *Snow Bounders* – 9189 Cattaraugus-Otto Rd., Cattaraugus, NY 14719 – Web: www.snowbounders.com
- *Southern Tier Snowdrifters* – PO Box 755, North Collins, NY 14111 – Hot Line: (716) 337-0732
- *Tri-County Driftoptions* – 7146 Allen Road, Arcade, NY 14009
- *WNY Snowmobile Club of Boston* – PO Box 137, Boston, NY 14025 – Hot Line: (716) 941-6076 – Web: www.bostontrails.com

Please Adhere To All Signs Posted Along the Trail
RIDE SAFE – RIDE WITH RESPECT – STAY ON THE TRAILS

Our sincere thanks to the private landowners whose permission makes our trail system possible. Respect your privileges. A little courtesy goes a long way.

Download our Snowmobile POIs to your GPS

The trails are subject to change at any time. For the most current trail information please check our website at: <http://www.enchantedmountains.com/activity/snowmobiling>



This map was created using GIS & GPS technology.
 Prepared by Cattaraugus County
 Department of Economic Development, Planning & Tourism &
 Real Property Services
 303 Court Street
 Little Valley, NY 14755
 (716) 938-2331
www.cattco.org
 Joseph Williams-Industrial Program Specialist
JWilliams@cattco.org
 Daniel Martonis-GIS Coordinator
DMartonis@cattco.org
 November 3, 2009

Cattaraugus County, its Departments, employees and agents make no representation or guarantee as to the safety or accuracy of the trails indicated on the map. Cattaraugus County does not endorse or give permission for the use of the snowmobile trails and is not liable for any claims from riders or landowners. The trails are listed only as a guide to the trails available in the County and are subject to change at any time.

For information about the trails or where to stay contact us at 1-800-331-0543 or go to www.EnchantedMountains.com