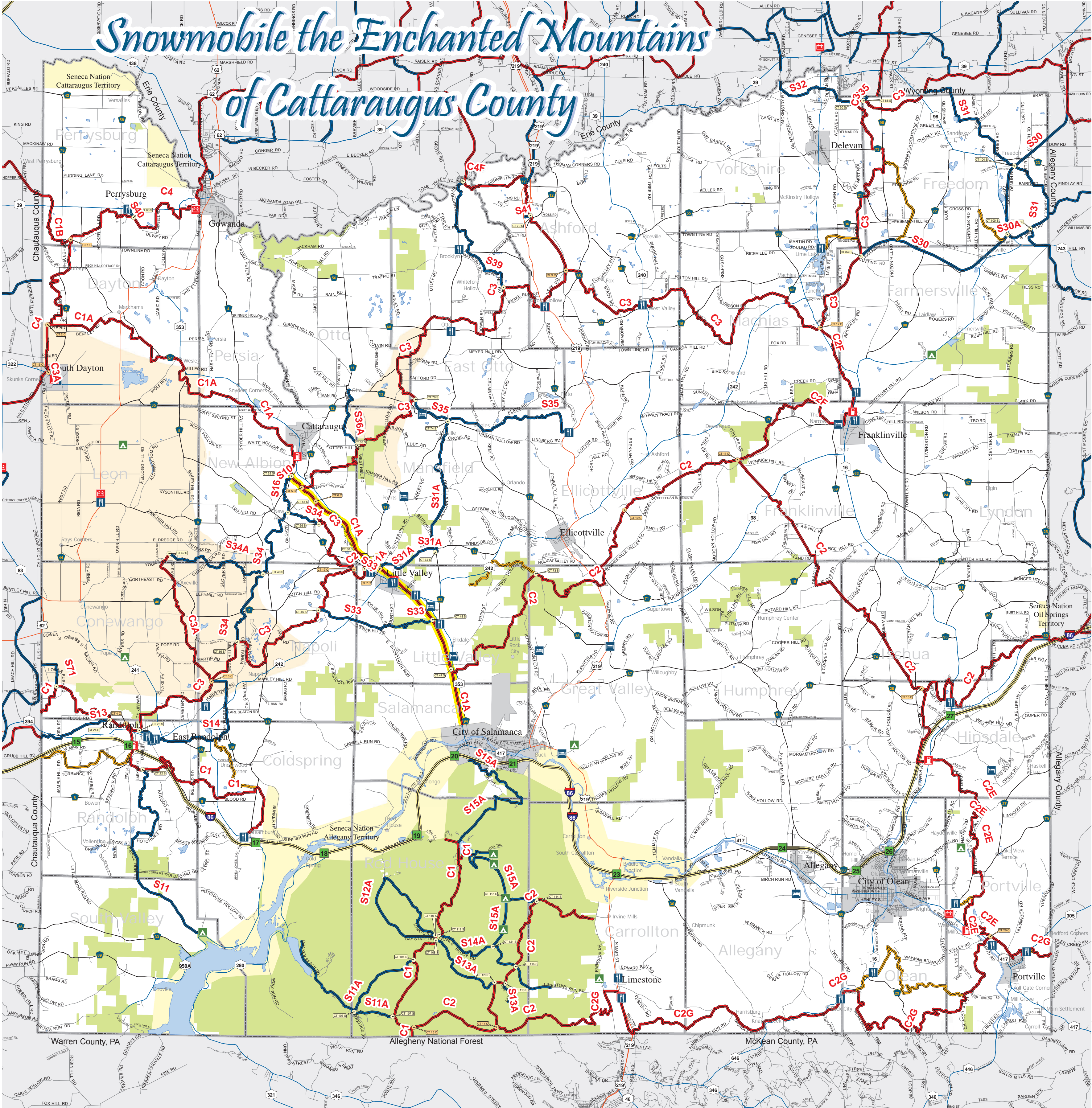


# Snowmobile the Enchanted Mountains of Cattaraugus County



## Legend

- Corridor Trail
- Secondary Trail
- Unfunded Trail
- Pat McGee Trail
- Waterbodies
- Parts/Rep
- Cabins
- Lodging
- Food
- Gas
- Amish Country
- Seneca Nation Territory
- State Land
- Interstate Highway
- Interstate Ramp
- US Highway
- NYS Highway
- County
- City Street
- Village Street
- Town Road

The *Enchanted Mountains* of Cattaraugus County is home to Allegany State Park, the largest State Park in New York and the third largest State Park in the Nation. Over 350 miles of Groomed Snowmobile Trails abound in Cattaraugus County, PLUS over 70 miles of Well Groomed Trails in scenic Allegany State Park.

Cattaraugus County has Nine Snowmobile Clubs within its borders.

- Ashford Snowmobile Club – P.O. Box 96, West Valley, NY 14171
- Elibomwons – 4164 Elm Creek Road, Randolph, NY 14772
- Enchanted Mountains Border Riders – P.O. Box 325, Weston Mills, NY 14788 [enchantedmountainsborderriders.com](http://enchantedmountainsborderriders.com)
- Franklinville Snowmobile Club – P.O. Box 22, Franklinville, NY 14737 [www.franklinvillesnowmobileclub.org](http://www.franklinvillesnowmobileclub.org)
- Portville Snowmobile Club -- P.O. Box 466, Portville, NY 14770 [portvillesnowmobileclub.org](http://portvillesnowmobileclub.org)
- Snow Bounders – 6505 Sweeney Hill Road, Little Valley, NY 14755 [www.snowbounders.com](http://www.snowbounders.com)
- Southern Tier Snowdrifters – PO Box 755, North Collins, NY 14111 [stsnowdrifters.com](http://stsnowdrifters.com)
- Tri-County Driftooppers – P.O. Box 161, Sandusky, NY 14133-0161
- WNY Snowmobile Club of Boston – PO Box 137, Boston, NY 14025 [www.bostontrails.com](http://www.bostontrails.com)

**Please Adhere To All Signs Posted Along The Trail  
RIDE SAFE - RIDE WITH RESPECT - STAY ON THE TRAILS**

Our sincere thanks to the private landowners whose permission makes our trail system possible. Respect your privileges. A little courtesy goes a long way.

The trails are subject to change at any time. For the most current trail information, please check our website at: <http://www.SnowmobileWNY.com>



This map was created using GIS & GPS technology  
Prepared by Cattaraugus County  
Department of Economic Development, Planning & Tourism  
303 Court Street  
Little Valley, New York 14755  
(716) 938-2320  
[www.cattco.org](http://www.cattco.org)  
November 2012

*Cattaraugus County, its Departments, employees and agents make no representation or guarantee as to the safety or accuracy of the trails indicated on the map. Cattaraugus County does not endorse or give permission for the use of the snowmobile trails and is not liable for any claims from riders or landowners. The trails are listed only as a guide to the trails available in the County and are subject to change at any time.*

**Download our Snowmobile POIs to your GPS**

For information about the trails or where to stay contact us at 1-800-331-0543 or go to [www.EnchantedMountains.com](http://www.EnchantedMountains.com)